



NORTH WEALD BASSETT NEIGHBOURHOOD PLAN

YOUR VOICE. YOUR PLAN. OUR FUTURE.

**HERE'S WHAT
YOU TOLD US!**

**Your feedback
was invaluable**

**The feedback you gave us will be used to shape the
policies included within the Draft Neighbourhood
Plan. This Booklet gives you a summary of your
responses**



Statistical Summary

A questionnaire was hand delivered to each home in the Parish in March 2025. It was also available online to complete.

Completed hard copy questionnaires were collected where requested from each home - by hand.

According to the 2021 census, there are 2,279 homes in the Parish of North Weald Bassett, and approximately 6,500 residents.



A total of 303 questionnaires were completed, a household response rate of **13.3%**.

Questionnaires could be completed representing the views of an entire family. A total of 674 views were recorded, representing **10.4%** of our residents.



12% of respondents live in Thornwood

8% of respondents live in Hastingwood

79% of respondents live in North Weald Village

1% of respondents did not indicate where they live

59% of residents confirmed they wanted to be kept informed on the Neighbourhood Plan progress.

44% of respondents took the opportunity to provide us with additional information, setting out matters that were important to them.

Now let's find out what you told us.....



Question 1 Previously you'd told us that the characteristics you liked about the village you live in included its friendliness, the rural, countryside and village feel, the peace and quiet, and its shops and pubs. We asked if you still felt the same:

- 82% **Said you still felt the same**
- 16% **Said you didn't feel the same**
- 2% **Did not respond**

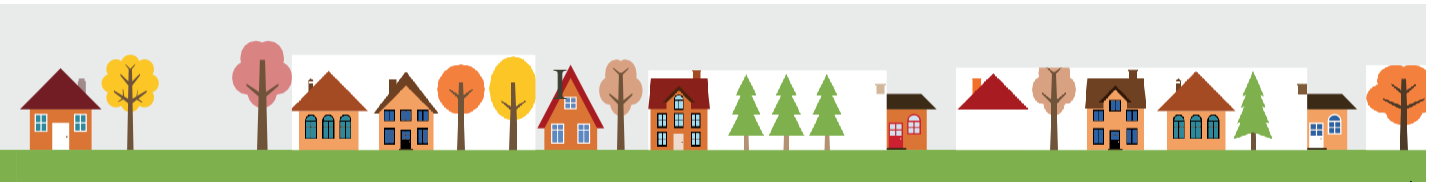
37% of respondents provided additional comments, the most frequent of which were along the following themes:



Question 2 Previously you'd told us about the characteristics you didn't like about the village you live, which included the traffic, crime and antisocial behaviour, lack of public transport and poor choice of shops and pubs. We asked if you still felt the same:

- 93% **Said you still felt the same**
- 6% **Said you didn't feel the same**
- 1% **Did not respond**

50% of respondents provided additional comments, the most frequent of which were along the following themes:



Question 3 Previously we'd asked the under 16 how they felt, with 40% responding confirming they liked the open spaces, access to play, parks and playgrounds. 25% had mentioned they wanted to see more sporting activities, a skate park, gym, football and leisure facilities. Of the under 16 who responded:

- 96% Said you still felt the same
- 4% Said you didn't feel the same

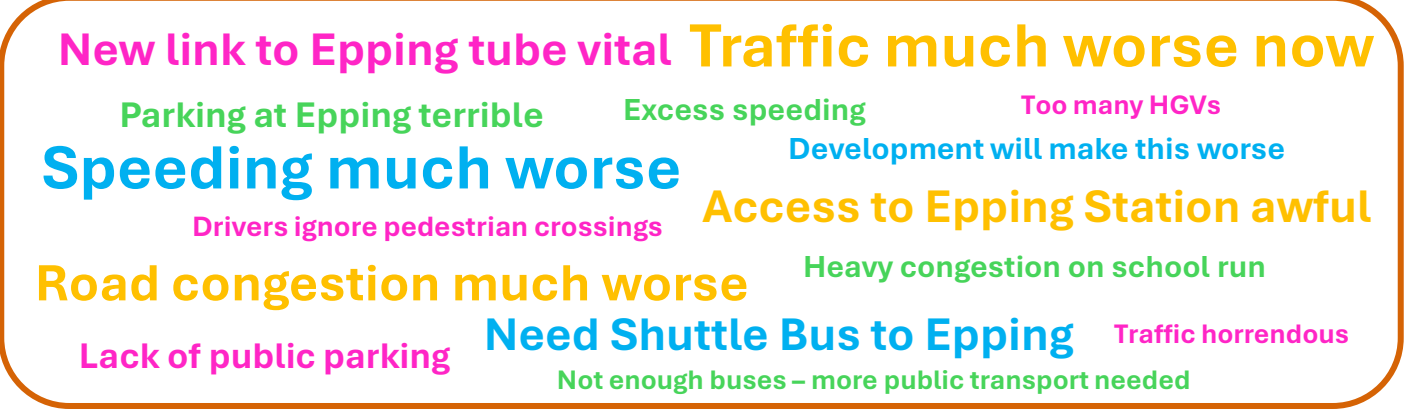
14% of respondents provided additional comments, the most frequent of which were along the following themes:



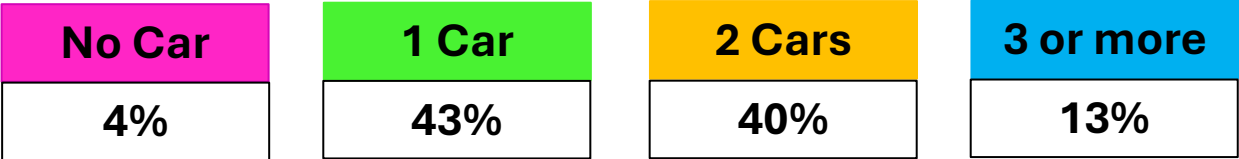
Question 4 Previously we'd asked what your biggest transport problems were. You said traffic exceeding the speed limit, congested roads, travel to/from and parking at Epping Underground Station, and lack of public parking. We asked if you still felt the same:

- 91% Said you still felt the same
- 6% Said you didn't feel the same
- 3% Did not respond

48% of respondents provided additional comments, the most frequent of which were along the following themes:



Question 5 We asked how many cars your household has. The responses were:



- Every respondent from Hastingwood had at least 1 car
- 95% of respondents from North Weald Village have at least 1 car
- 94% of respondents from Thornwood have at least 1 car

In Essex, 82.5% of households have access to at least one car or van – Source ONS Census 2021

Question 6 Previously we’d asked what new transport methods you wanted to see. You’d told us links to Epping via the Epping Ongar Railway, better bus services, cycling paths from North Weald and Thornwood to Epping, and accessible travel for the less able. We asked if you still felt the same:

- 91% Said you still felt the same**
- 6% Said you didn’t feel the same**
- 3% Did not respond**

38% of respondents provided additional comments, the most frequent of which were along the following themes:

Epping to Ongar commuter line to reopen

Frequent, reliable bus services

More cycle paths

Links to Epping via Railway

Public transport in Hastingwood

North Weald station reopen

Better public transport to Epping

More weekend and late night buses

Roads to Epping too dangerous

Improved Roads

Better connection to central line

Extend Central Line to Ongar

Accessible Travel



Question 7 Previously we'd asked what worried you about new development. You'd said increase in traffic, increase in crime, impact of healthcare facilities, loss of community and village feel, and loss of access to the countryside. We asked if you still felt the same:

- 96% Said you still felt the same
- 1% Said you didn't feel the same
- 2% Did not respond

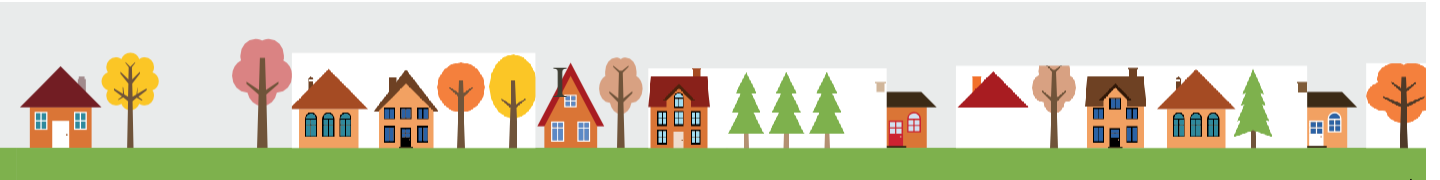
49% of respondents provided additional comments, the most frequent of which were along the following themes:



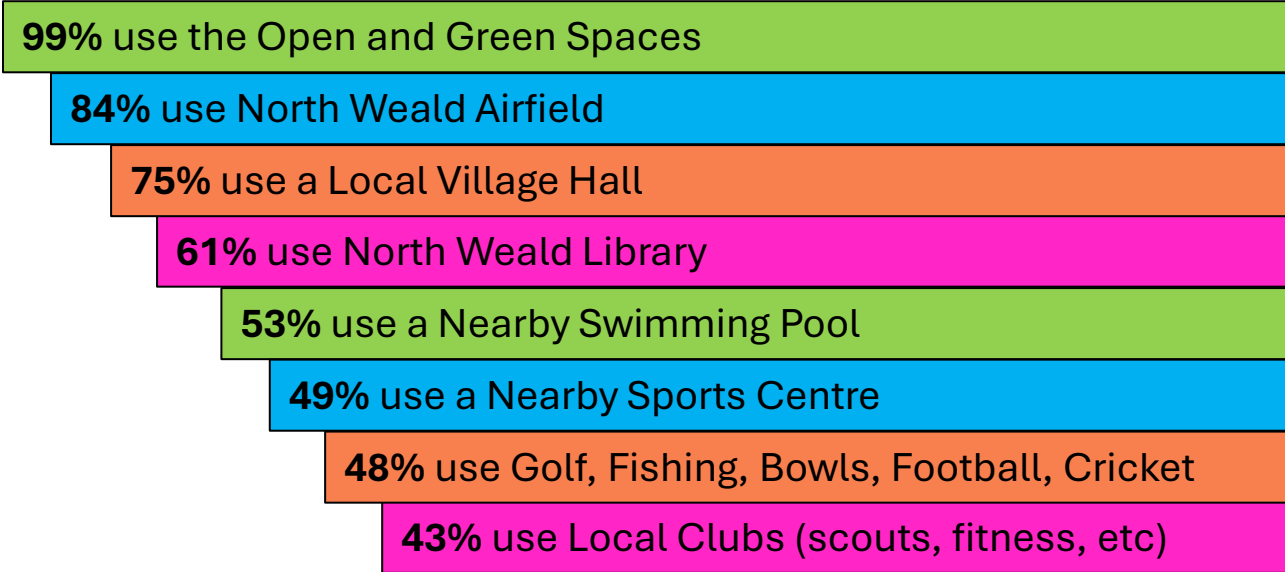
Question 8 Previously we'd asked what was important when designing new homes. You'd said sufficient parking, considering crime, set back from roads, access to open space, respecting character and landscaping to soften borders. We asked if you still felt the same:

- 94% Said you still felt the same
- 3% Said you didn't feel the same
- 3% Did not respond

33% of respondents provided additional comments, the most frequent of which were along the following themes:



Question 9 We asked what leisure facilities you use. Out of those who responded:



Question 10 Previously we'd asked you how you felt about North Weald Airfield. You'd told us that it was a valued community asset, that the Grade II listed control tower should be retained and used for the local community or public use, that the new commercial buildings should not jeopardise future aviation operations, that the Airfield should continue to be used for flying, and that HGV access to the new employment area must come from Rayley Lane/Merlin Way. We asked if you still felt the same:

- 96% Said you still felt the same
- 2% Said you didn't feel the same
- 2% Did not respond

27% of respondents provided additional comments, the most frequent of which were along the following themes:

Bring back fighter meet

Historic and valued asset

Concern about Google data centre

Protect for future generations

Make more of the museum

Keep planes flying

Access must not be through village

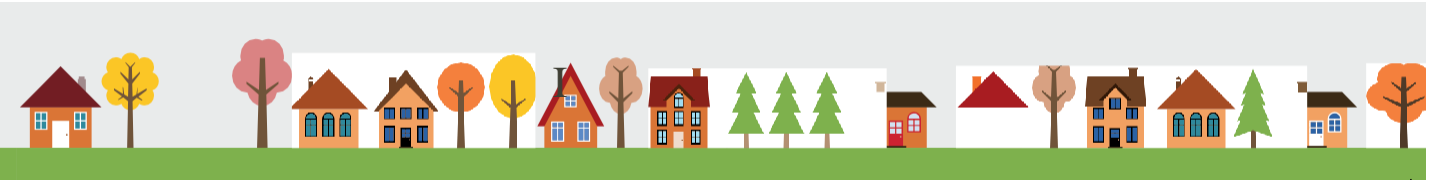
Historical treasure

Must be protected

Market traffic can be an issue

Valued local asset

Stop building on the Airfield



Question 11 We wanted to know how you felt about the following:

	Agree	Disagree	Unsure
Q. Public parking is an issue in North Weald?	78%	9%	13%
Q. Lack of pavements is an issue in Hastingwood?	45%	3%	51%
Q. Thornwood would benefit from the provision of improved community facilities and a hub?	50%	3%	47%
Q. Public Transport provision should be improved through all three villages in the Parish?	91%	2%	7%

Responses tended to be either positive or negative dependent on the village in which you lived, with many of the ‘Unsure’ responses being regarding a question outside the village in which you lived.

Question 12 Previously we’d asked what open and green spaces were important to you. We wanted to know if you still felt the same, or if there were any other spaces that you felt needed to be protected. You said:

	Important	Not Important
Village Green, Wheelers Farm Gardens, NW	91%	9%
Weald Common (part of), NW	97%	3%
Green in front of York Road, NW	88%	12%
Green by Pike Way, NW	87%	13%
Green by Park Close, NW	87%	13%
Land in front of Airfield Museum, NW	94%	6%
Memorial Playing Fields, NW	97%	3%

We asked you why these spaces were important, or if there were other spaces special to you. You said:

Need for dog walking Village life Harlow Common It's why we choose to live here

For recreation **Need space for mental wellbeing** Keep healthy

All open space important Protect our green spaces Breathe

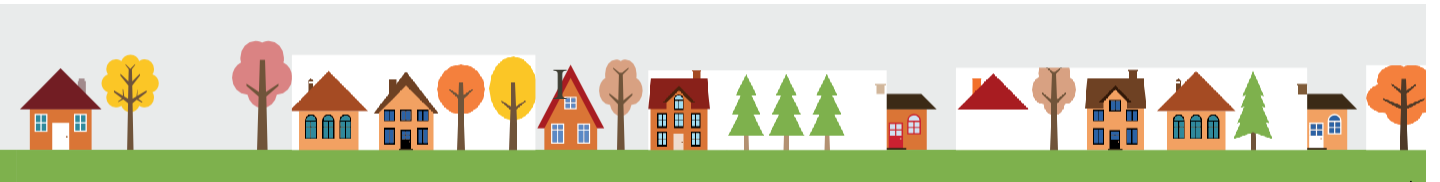
Space Bluemans End To exercise Opportunity to meet people For wildlife

For our children's mental health Nature Reserves Protect Radio Station area



Question 13

We asked if there was anything else you wanted to tell us. 44% of respondents provided additional comments, the most frequent of which were along the following themes:



THANK YOU FOR TAKING THE TIME TO LET US KNOW
HOW YOU FEEL.

What's next?



We will review your responses and include them in our evidence base used to create a Draft Neighbourhood Plan.



We hope to publish the Draft Neighbourhood Plan for you to comment on before the summer.

If you want to find out more about the
Neighbourhood Plan, visit
www.northweald-pc.gov.uk

Facebook: North Weald Bassett Neighbourhood Plan

Address: NWBPC
Queens Hall Community Centre
School Green Lane
North Weald, Essex
CM16 6EJ

Email: NP@northweald-pc.gov.uk

Website: www.northweald-pc.gov.uk

Telephone 07572 507591

Visit www.northweald-pc.gov.uk for a copy of our data protection policy
For full information about the Neighbourhood Plan, visit www.northweald-pc.gov.uk

