



NORTH WEALD BASSETT

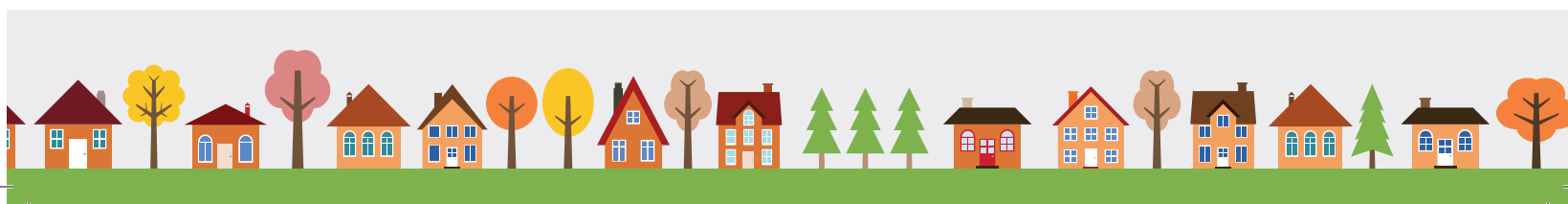
NEIGHBOURHOOD PLAN

YOUR VOICE. YOUR PLAN. OUR FUTURE.

**Thank You for completing the
Neighbourhood Plan Questionnaire**

**Your feedback
was invaluable**

**We promised to let you know the results of
the questionnaire - this booklet gives you a
summary of the main points YOU raised**



Thank You

1,260 households completed the questionnaire
representing the views of 2,909 residents



That's 48%

48% based on total residents as per the 2011 census

Your responses will now be used as supporting evidence when formulating
the North Weald Bassett Neighbourhood Plan

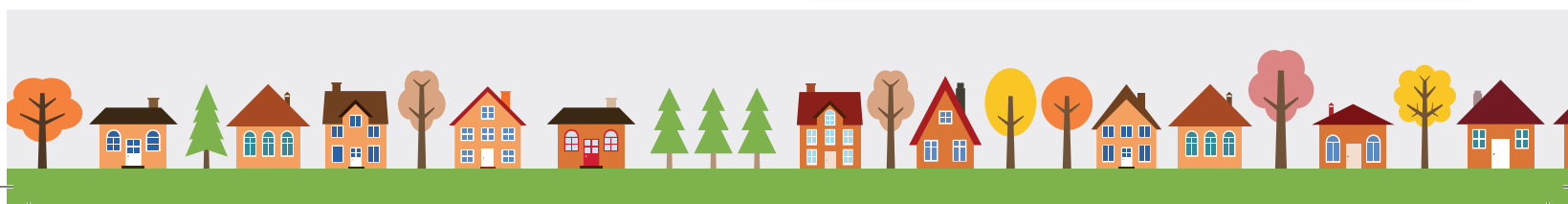
Take a look through the next few pages
to see what you said

Setting the scene

According to the 2011 census,
our Parish looked like this:



6,030	Number of residents
2,495	Number of households
1,060	Children under 16
3,760	Working age adults
1,210	People over 65
360	Single pensioner households
530	From black or minority ethnic groups
3,161	Economically active residents
656	Number of detached houses
969	Number of semi-detached houses
699	Number of terraced houses



What YOU told us

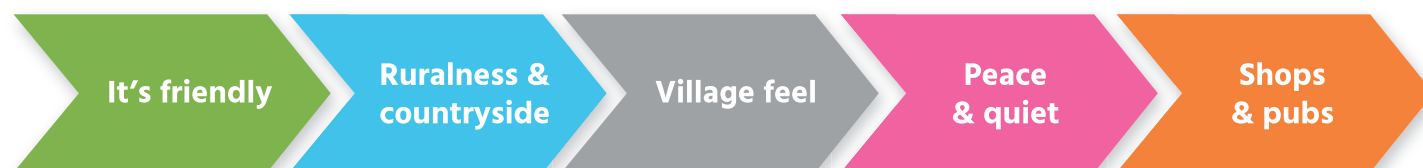
Who responded

1,260 responses

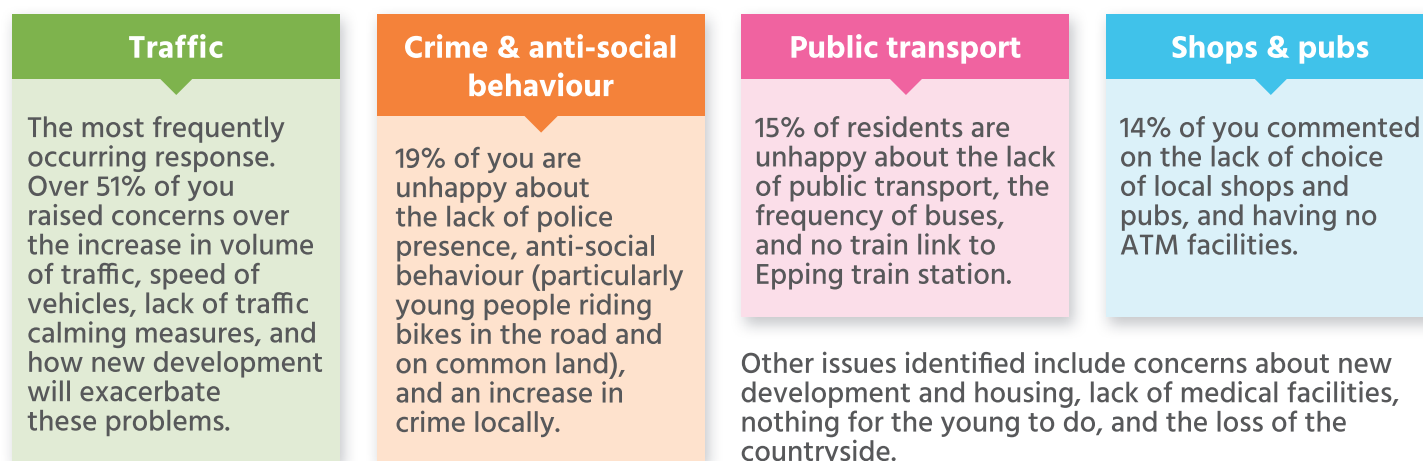


The highest response rate came from households with 2 people (39%), followed by single person households (24%).

What you said you liked about the village in which you live



What you said you didn't like about the village in which you live

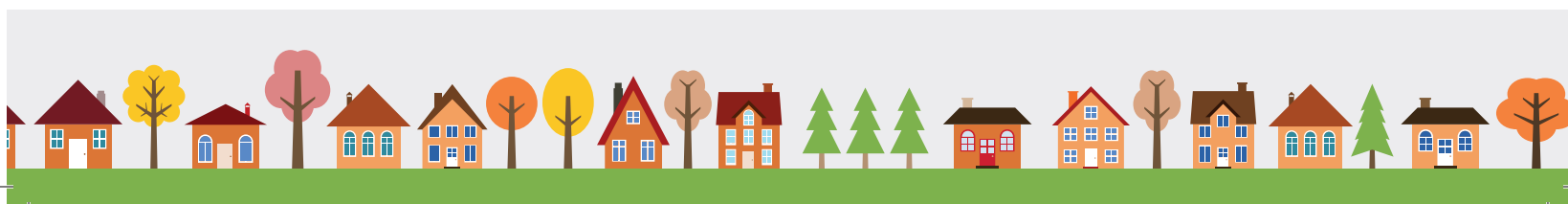


What did the under 16s think?

40% of the under 16s who responded like the open and green spaces in their village, having space to play and walk/cycle. They also like having parks and playgrounds (although the playgrounds could be bigger and better!)

25% mentioned they would like to see more sporting activities, suggesting a swimming pool, skate park, gym, football facilities, and sports/leisure centre.

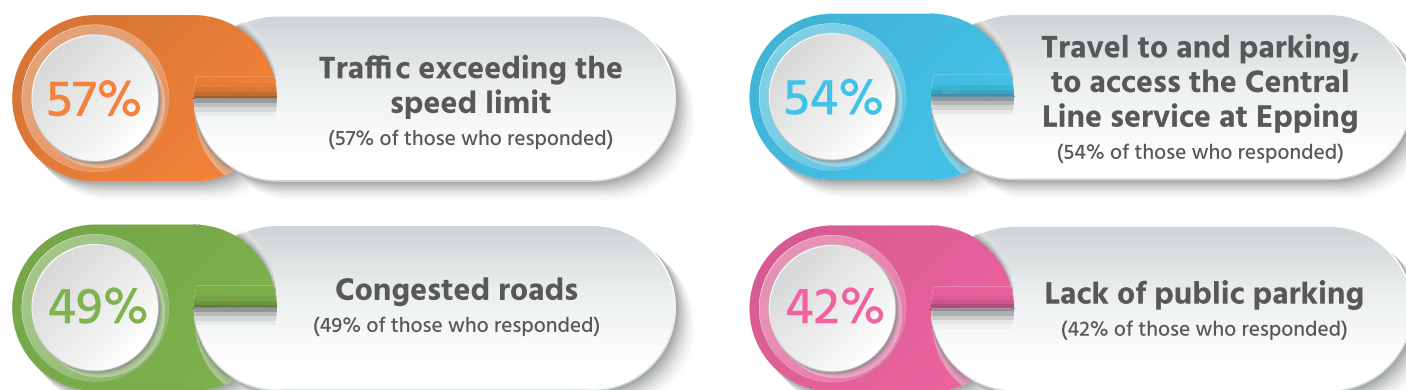
Concerns over being able to safely cross the road and the speed of the traffic were also frequently mentioned, as well as better public transport links.



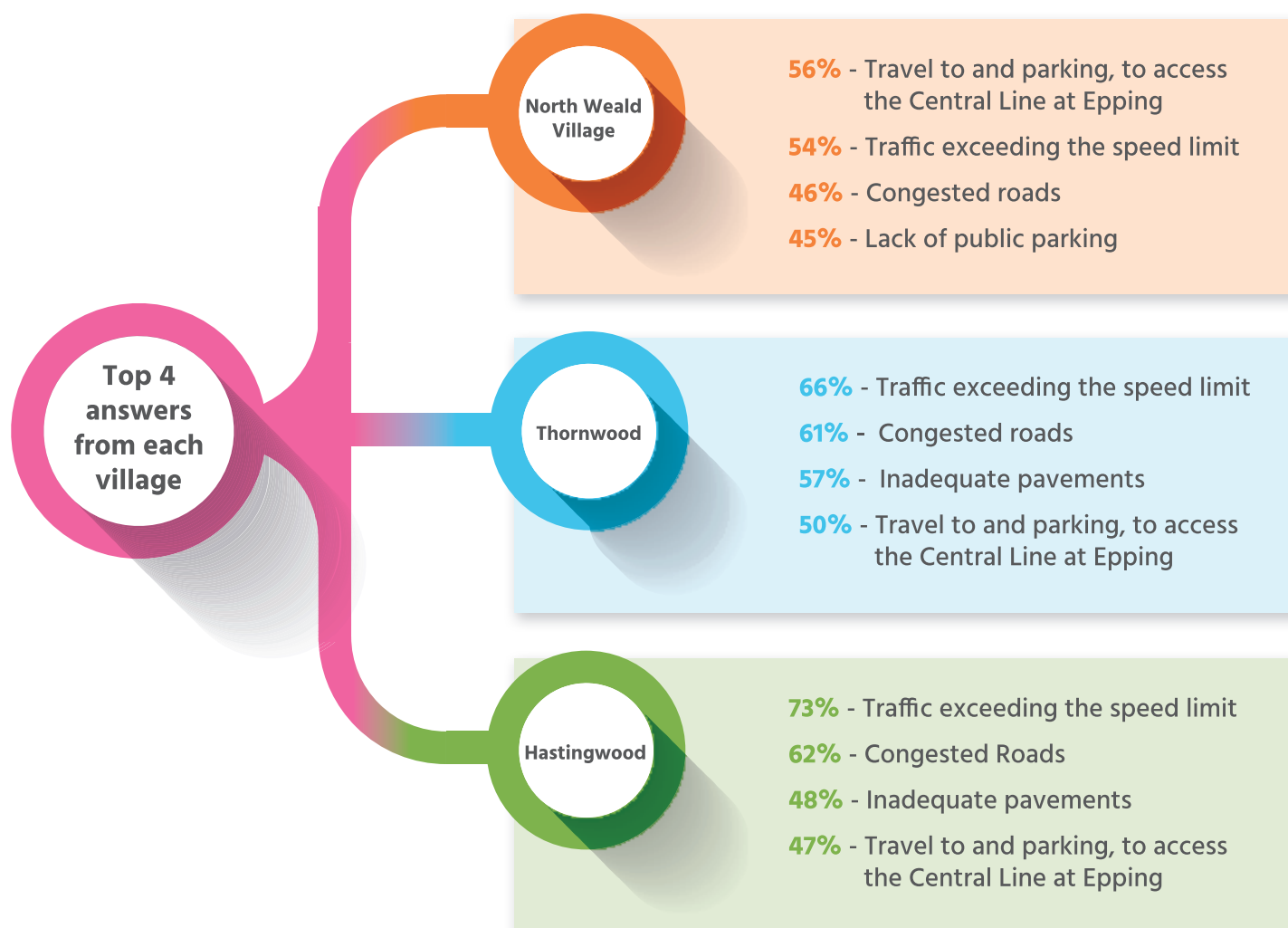
Transport

Issues around traffic was the most frequently occurring response to what you don't like about the village in which you live – over 51% of you raised this.

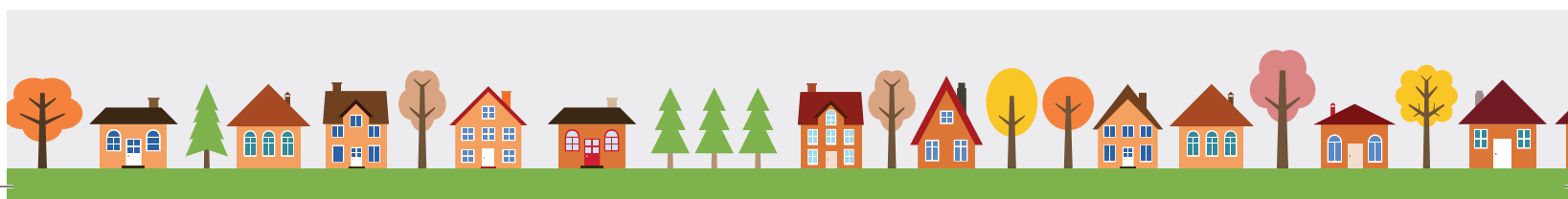
What are the biggest transport problems experienced by our residents?



Other issues raised include the frequency and reliability of buses, and inadequate pavements.



Data derived from responses to Question 7. Do you currently experience any transport problems?



How many vehicles does each house have?

Most homes have
2 vehicles

42%

Homes with 3
or more vehicles

17%

Next are homes
with 1 vehicle

35%

Homes without
vehicles

6%

94% of homes in the parish
have at least 1 vehicle.

Data derived from responses to Question 18. How many cars/vehicles in your household?

What new transport methods would residents like to see?

67%

**Links to Epping via the
Epping Ongar Railway**

(67% of those who responded)

46%

**More frequent and
improved bus services**

(46% of those who responded)

43%

**Cycling paths from
North Weald or
Thornwood into Epping**

(43% of those who responded)

28%

**Accessible travel for
the less able**

(28% of those who responded)

Other comments included suggestions that reinstating the underground line at North Weald would reduce the traffic on the roads, and more cycles and cycling paths are needed.

75% - Links to Epping via the Epping
Ongar Railway

49% - More frequent and improved
bus services

42% - Cycling paths from North Weald
or Thornwood into Epping

North Weald
Village

51% - Cycling paths from North Weald
or Thornwood into Epping

42% - More frequent and improved
bus services

41% - Links to Epping via the Epping
Ongar Railway

Thornwood

46% - Cycling paths from Hastingwood
to North Weald

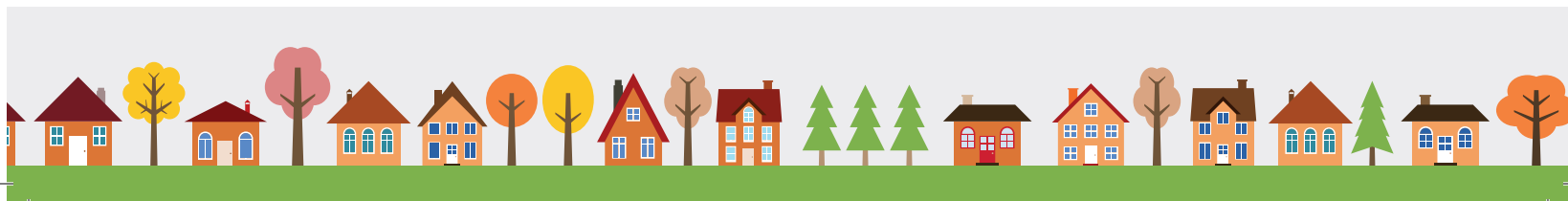
39% - Links to Epping via the Epping
Ongar Railway

35% - Cycling paths from North Weald
or Thornwood into Epping

Hastingwood

**Top 3
answers
from each
village**

Data derived from responses to Question 8. Would you or your household like to see any of the following new transport methods?



Development

What are your biggest worries about new development?



Other concerns include lack of parking in the village, insufficient leisure facilities, and loss of green spaces between existing houses.

Many people are concerned that with a large increase in housing development, there will be an even greater pressure on existing services, especially healthcare/ medical services.

Responses derived from answers to question 19. Do you have any worries about the new development?

4% of you are not concerned about new development

What do you think are the most important things to consider when designing new homes?



Responses derived from answers to question 15. When building new homes, what should be considered in terms of their design?

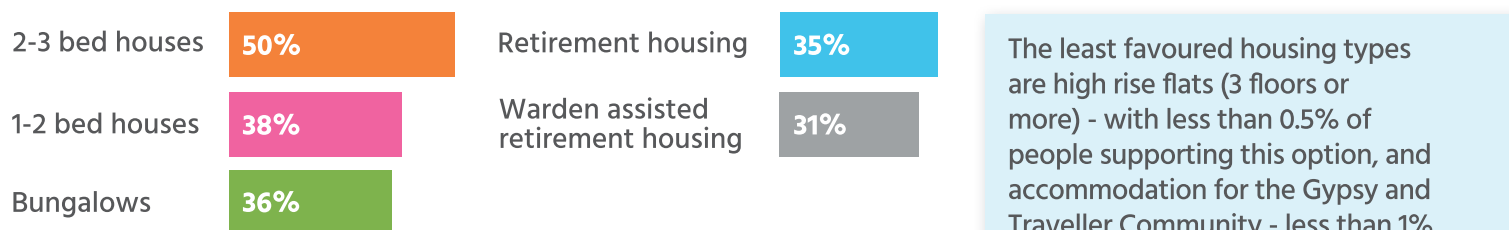
Where do you think new development should go?

The most commonly suggested locations for development were:

Along the A414	Blakes Golf Course	Brownfield Sites
Close to the Harvester Roundabout	The Airfield	Those sites identified in the Local Plan
	Rayley Lane Golf Course	

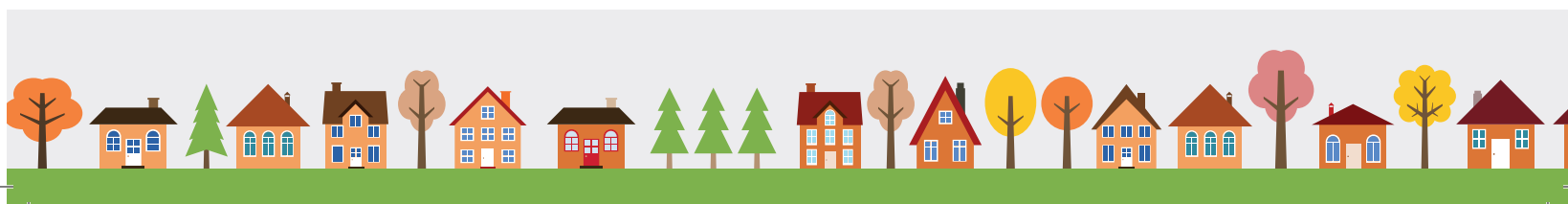
Of those who responded, 30% of you don't want to see any new development.

You told us that these were the most needed types of housing in your villages



The least favoured housing types are high rise flats (3 floors or more) - with less than 0.5% of people supporting this option, and accommodation for the Gypsy and Traveller Community - less than 1%.

Responses derived from answers to questions 16 and 17. Where in your village, do you think the new development should be built? What type of housing do you think is needed for the village in which you live?



Leisure

What leisure facilities do you currently use?

70% of you make use of our open and green spaces

42% use the airfield

41% use the village halls

35% use the library

31% use a nearby swimming pool

31% use a nearby sport centre

20% are involved with community and privately-run clubs, such as dance, fitness, karate, scouts etc.

Other responses include golf (16%), football (8%), fishing (7%), and bowls (5%).

Weald Common, Thornwood Common, Harlow Common and North Weald Airfield are all areas that you feel are valued open spaces, and should be protected for our future.

92% of you consider North Weald Airfield to be an important asset to North Weald.

Data derived from responses to questions 11, 12 & 14. What existing leisure and community facilities either within or outside the Parish do you currently use? Are there any valued open spaces that you think should be protected for our future? If so, where are they? Do you feel North Weald Airfield is an important asset to North Weald?

Our Vision

Question 21 asked if residents agreed with the statement:

"Our Parish is made up of three distinctive villages – North Weald, Hastingwood and Thornwood. Future development must integrate each village's unique character and housing design, whilst ensuring its ongoing sense of community"



1078 agreed



71 disagreed



111 did not respond

This statement will form the basis of the vision for our Parish and our Neighbourhood Plan.





NORTH WEALD BASSETT NEIGHBOURHOOD PLAN

YOUR VOICE. YOUR PLAN. OUR FUTURE.

The Neighbourhood Plan Steering Group, together with a number of local residents and the Parish Council, continue to work on creating a Neighbourhood Plan.

The feedback from the Questionnaires will form part of the evidence base that will be used to create a vision, objectives, and draft policies for our Neighbourhood Plan.

Evidence is being collected and compiled. We'll come back to you later in the year to ask for your future input.

Facebook:

North Weald Bassett Neighbourhood Plan

Twitter:

@NWBPN

Address:

Neighbourhood Plan Steering Group,
NWBPC, North Weald Library,
138 High Road,
North Weald, Essex CM16 6BZ

Email:

info@northwealdbassettplan.org

Website:

www.northwealdbassettplan.org

Telephone:

01992 523825

Thank you again to all of our residents who responded, and a special thank you to all of those who volunteered their time to deliver and collect the questionnaires.

