

A Policy Idea on...

Designating Local Green Spaces

The following areas are very special to our community and should be **protected from development** by way of designating them as **Local Green Spaces**.

North Weald

- ◆ Weald Common (Part) (LGS1)
- ◆ Green in front of York Road (LGS2)
- ◆ Village Greens by Wheelers Farm Gardens (LGS3)
- ◆ Memorial Playing Fields (LGS4)
- ◆ Green by Pike Way (LGS5)
- ◆ Green by Park Close (LGS6)
- ◆ Land in front of Airfield Museum (LGS7)

Do you know...

Not all open spaces meet the criteria for designation as a Local Green Space in the Neighbourhood Plan. We need to consider if designating the land as a Local Green Space would add any additional protection. Some areas already have a statutory designation such as a Local Nature Reserve (LNR) or a Site of Special Scientific Interest (SSSi), or perhaps it is an extensive tract of land which may prevent it from being designated.

**Some areas are
already protected**

Church Lane Flood
Meadow **(LNR)**

Roughtalleys Wood
(LNR)

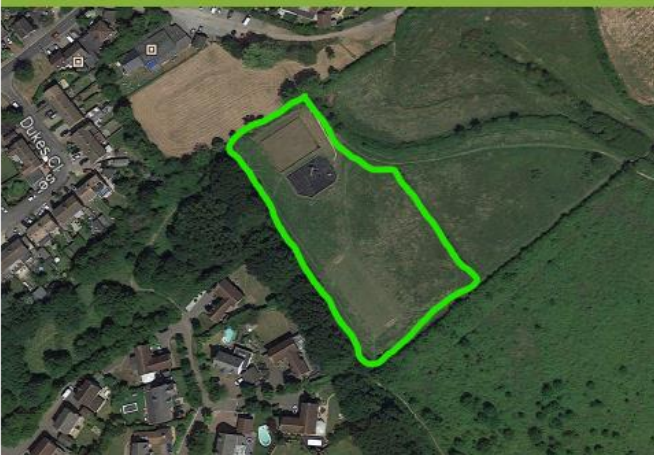
Thornwood Common
Area and Flood
Meadow **(LNR)**

Mill Street Commons
**(Registered
Common Land)**

Thornwood Common Recreation Ground
(District Open Land)

Local Green Space Designations

Weald Common
(Part) (LGS1)



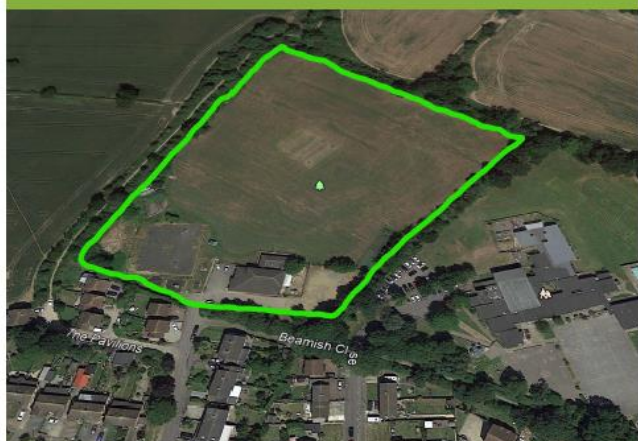
Green in front of York
Road (LGS2)



Village Greens by Wheelers Farm Gardens (LGS3)



Memorial Playing Fields (LGS4)



Green by Pike Way (LGS5)



Green by Park Close (LGS6)



Land in front of Airfield Museum (LGS7)

